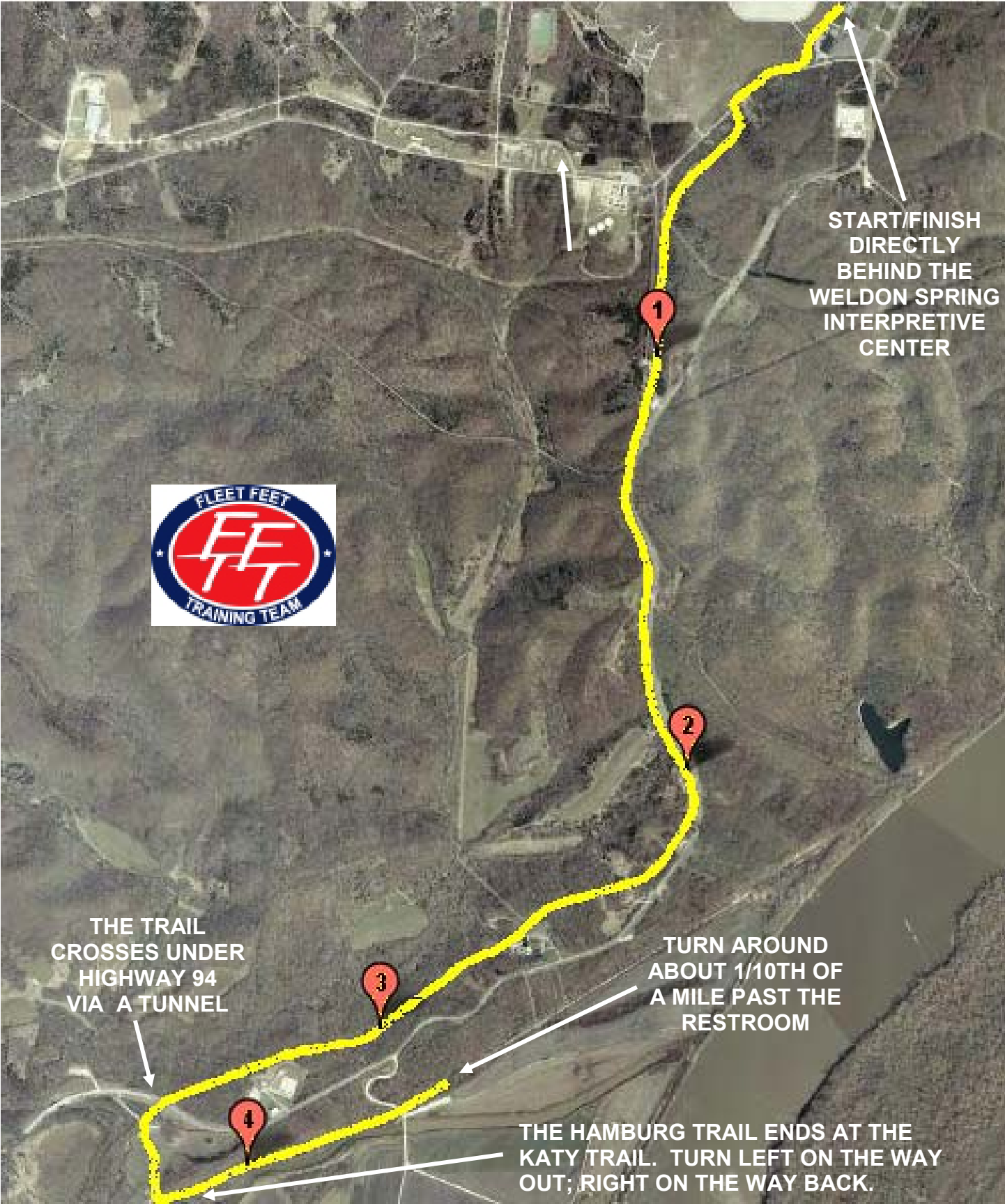


HAMBURG TRAIL 9 MILE



START/FINISH
DIRECTLY
BEHIND THE
WELDON SPRING
INTERPRETIVE
CENTER



THE TRAIL
CROSSES UNDER
HIGHWAY 94
VIA A TUNNEL

TURN AROUND
ABOUT 1/10TH OF
A MILE PAST THE
RESTROOM

THE HAMBURG TRAIL ENDS AT THE
KATY TRAIL. TURN LEFT ON THE WAY
OUT; RIGHT ON THE WAY BACK.